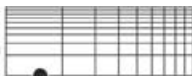


# PCI-PCMCIA Adapter Installation Instructions



**Audio**  
**precision**®



Audio Precision, Inc.  
PO Box 2209  
Beaverton, Oregon 97075-2209  
U.S. Toll Free: 1-800-231-7350  
Tel: 503-627-0832 Fax: 503-641-8906  
email: [techsupport@audioprecision.com](mailto:techsupport@audioprecision.com)  
Web: [audioprecision.com](http://audioprecision.com)

---

PN 8211.0128  
April 2001  
Rev. 1

Copyright © 2000 by Audio Precision, Inc. All rights reserved. No part of this document may be reproduced or transmitted in any form or by any means, electronic or mechanical, including photocopying, recording, or by any information storage and retrieval system, without permission in writing from the publisher.

**Audio Precision®, System One®, System One + DSP®, System Two®, Dual Domain®, APWIN®, AUDIO.TST®, FASTTEST®, and Portable One® are registered trademarks of Audio Precision, Inc.**



This mark signifies that the product conforms to all applicable requirements of the European Community. A Declaration of Conformance is included with the user information that describes the specifications used to demonstrate conformity.

Published by:



Audio Precision, Inc.  
PO Box 2209  
Beaverton, Oregon 97075-2209  
U.S. Toll Free: 1-800-231-7350  
Tel: 503-627-0832 Fax: 503-641-8906  
email: [techsupport@audioprecision.com](mailto:techsupport@audioprecision.com)  
Web: [audioprecision.com](http://audioprecision.com)

Printed in the United States of America

# Contents

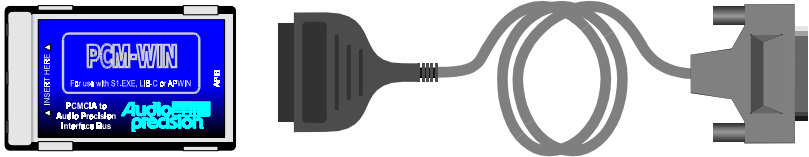
|  |          |
|--|----------|
| <b>Description .....</b>                                     | <b>5</b> |
| What is PCM-WIN Interface .....                              | 5        |
| Why PCMCIA Interface .....                                   | 5        |
| What this product consists of, and what else is needed ..... | 5        |
| <b>Installation Procedure .....</b>                          | <b>7</b> |
| For Windows 98 Systems .....                                 | 7        |
| For Windows NT Systems .....                                 | 17       |



# Description

These instructions are specific to installing a PCI-PCMCIA adapter in your desktop computer. This allows you to use a PCM-WIN PCMCIA Interface Card to control Audio Precision instruments via the APIB.

## ***What is PCM-WIN Interface***



**Figure 1. PCM-WIN card and APIB cable**

The Audio Precision PCM-WIN Interface card is a PCMCIA to APIB interface adapter (see Figure 1). Normally, it is used to connect a laptop computer equipped with a PCMCIA Type II slot to Audio Precision instruments via the Audio Precision Interface Bus (APIB). It functions the same as the ISA-WIN interface card that is generally used for the same purpose in desktop computers.

## ***Why PCMCIA Interface***

By installing a PCMCIA adapter interface card in a PCI slot of a desktop computer, you can easily move the PCM-WIN Interface card among computers, whether desktop or laptop.

## ***What this product consists of, and what else is needed***

These instructions are specific to the Card Drive (see cover photo). The components of this adapter consist of a card installed in a PCI slot of a desktop computer, a two-slot card drive unit, and an interconnecting cable assembly. The card drive unit will accommodate two independent type I, two type II, or type III PCMCIA cards.

Although the capability of this adapter is broader, these instructions focus on installing the adapter in a computer running Windows 98 or NT 4.0, and configuring the system to control Audio Precision instruments.

In addition to these components, you will need an Audio Precision PCM-WIN card and its accompanying APIB interface cable (shown in Figure 1).

**The sequence of this procedure is critical to the success of the installation. Follow these instructions carefully to insure proper operation.**

# Installation Procedure

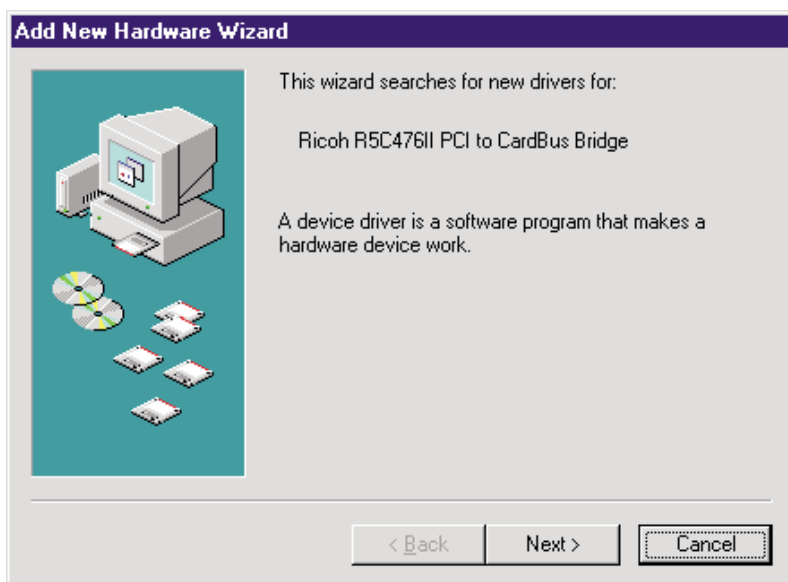
## *For Windows 98 Systems*

**This procedure should be followed before APWIN and PCM-WIN (the Audio Precision PCMCIA card) are installed.**

**Be sure to have your Windows 98 CD handy before beginning installation.**

**This procedure assumes that no other PCMCIA adapter is installed on the computer. This procedure also assumes that no Third Party Card and Socket Service software has been installed.**

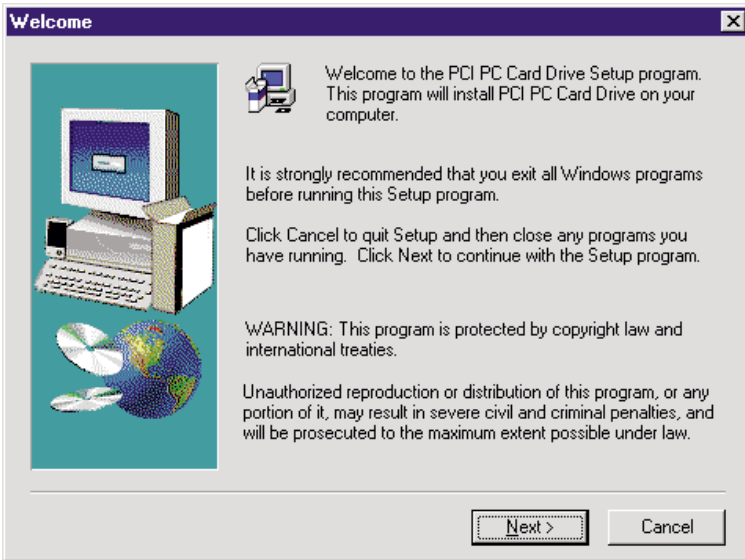
1. Install the hardware as instructed in the Manufacturer's manual. Do not install the software.
2. Turn on the computer. When windows starts it will detect the adapter and the window of Figure 2 will appear:



**Figure 2. Add New Hardware Wizard, first screen**

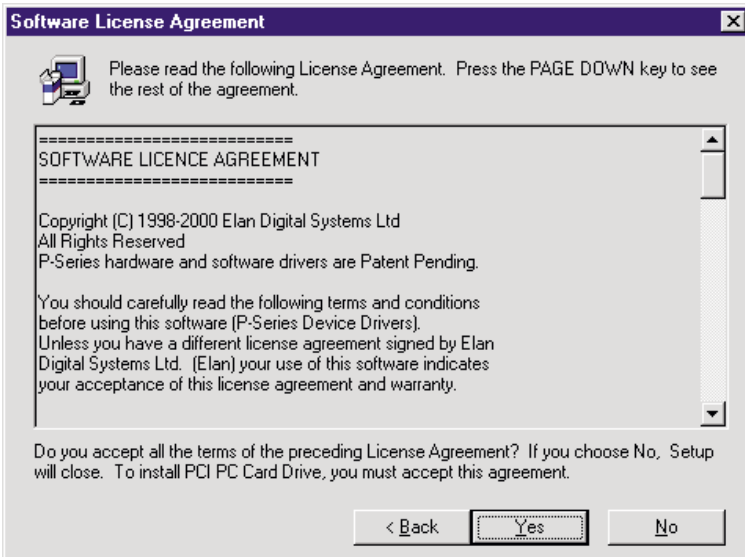
3. Click Cancel. Windows will then detect the second part of the adapter, and present the window of Figure 2 again.
4. Click Cancel. Allow Windows to start.

5. Run the setup.exe on the driver disk that comes with the PCMCIA adapter. The following screen will eventually appear:



**Figure 3. Setup program Welcome window**

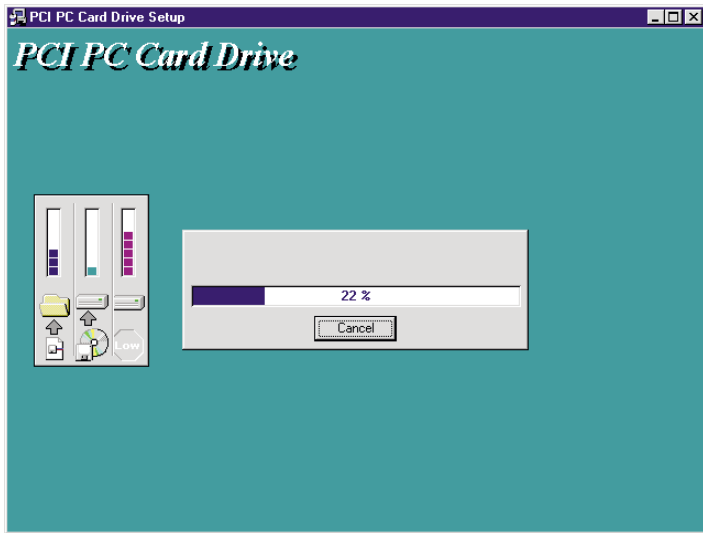
6. Click Next. The Software License Agreement Window appears:



**Figure 4. Software License Agreement window**

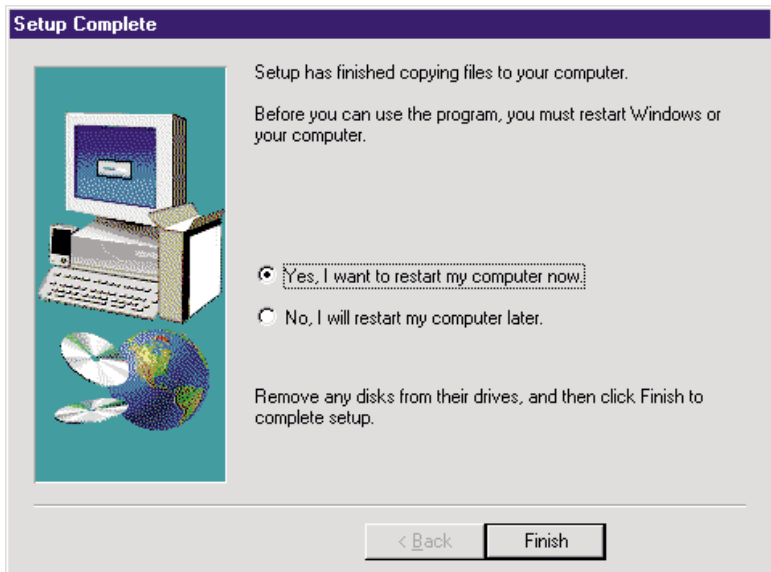


- Click Yes to accept the agreement. The PCI Card Drive Setup window appears:



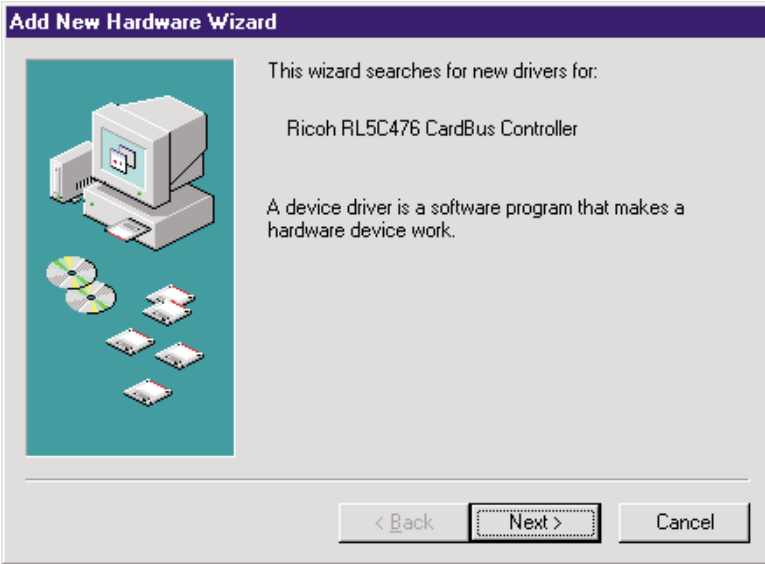
**Figure 5. PCI Card Drive Setup window**

- When the setup is complete, the window of Figure 6 appears. Make sure the "Yes, I want to restart my computer now" radio button is checked and click the Finish button.



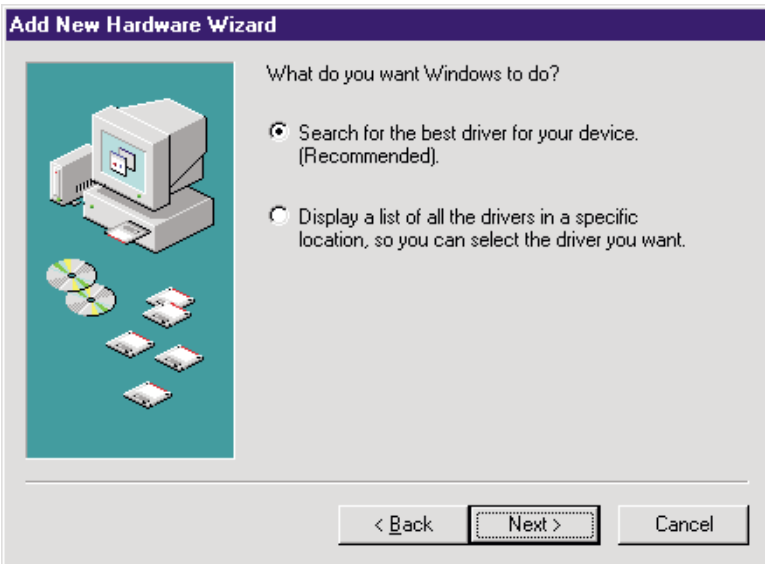
**Figure 6. Setup Complete window**

9. Let the computer reboot. When Windows boots up it will find the Adapter again, and the window of Figure 7 will appear:



**Figure 7. Add New Hardware Wizard window 1**

Click the Next button. The window of Figure 8 appears:



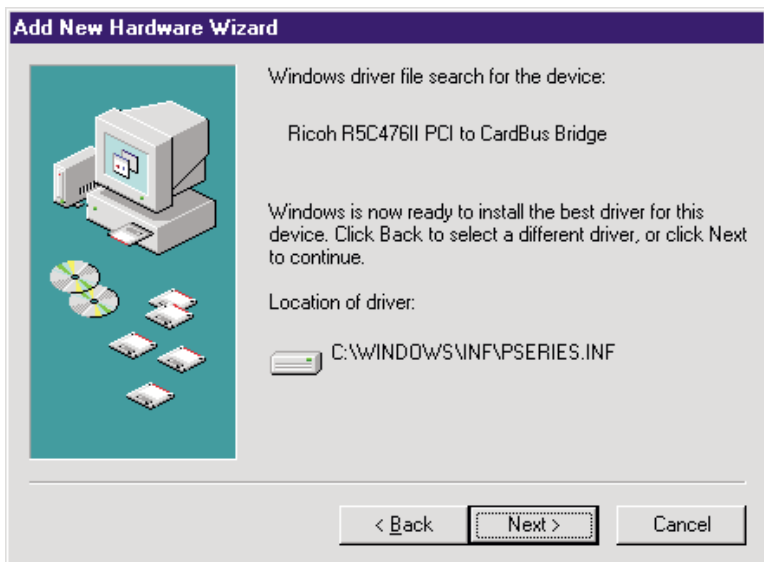
**Figure 8. Add New Hardware Wizard window 2**

10. Leave the "Search for the best driver for your device" radio button checked and hit the Next Button. The following window appears:



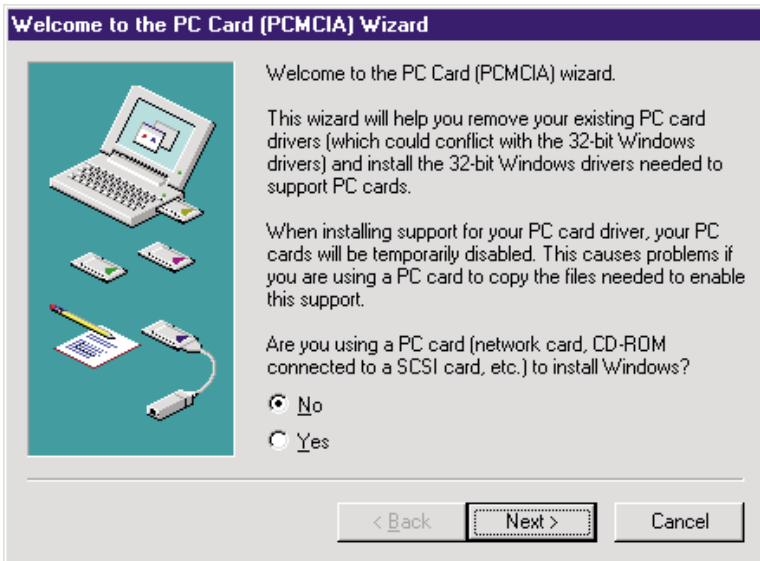
**Figure 9. Add New Hardware Wizard window 3**

11. Uncheck all of the boxes on the Add New Hardware Wizard Dialog and click the Next button. Windows will search briefly. Then the window of will appear:



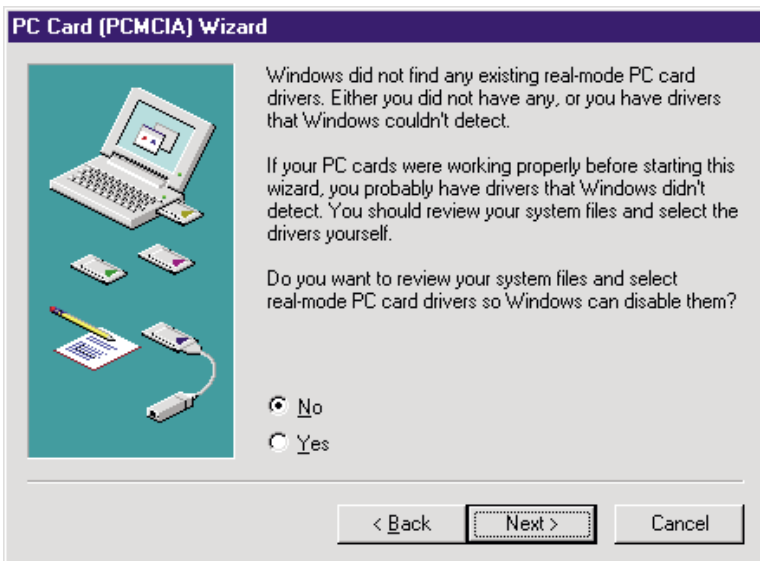
**Figure 10. Add New Hardware Wizard window 4**

12. Click Next. Windows then launches the PCMCIA Card Wizard (Figure 11):



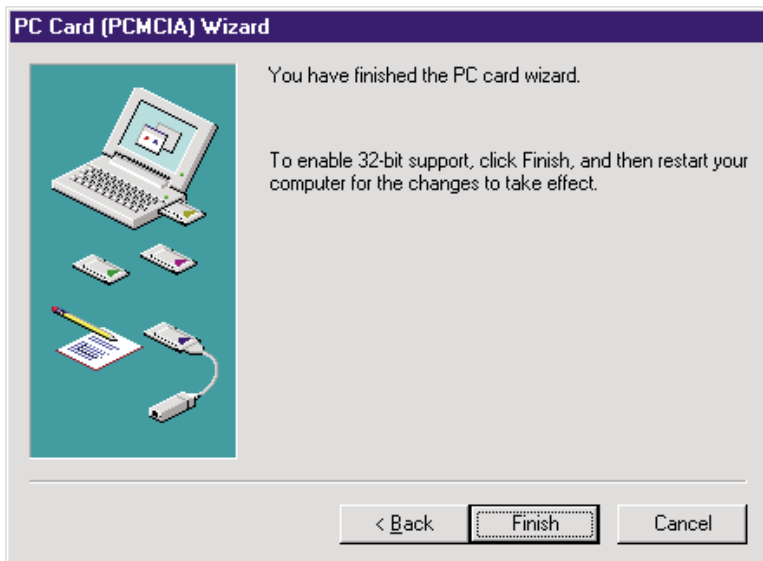
**Figure 11. PC Card Wizard window 1**

13. Confirm that No is selected, then click Next. The window of Figure 12 appears:



**Figure 12. PC Card Wizard window 2**

14. Confirm that No is selected, then click Next. The window of appears:



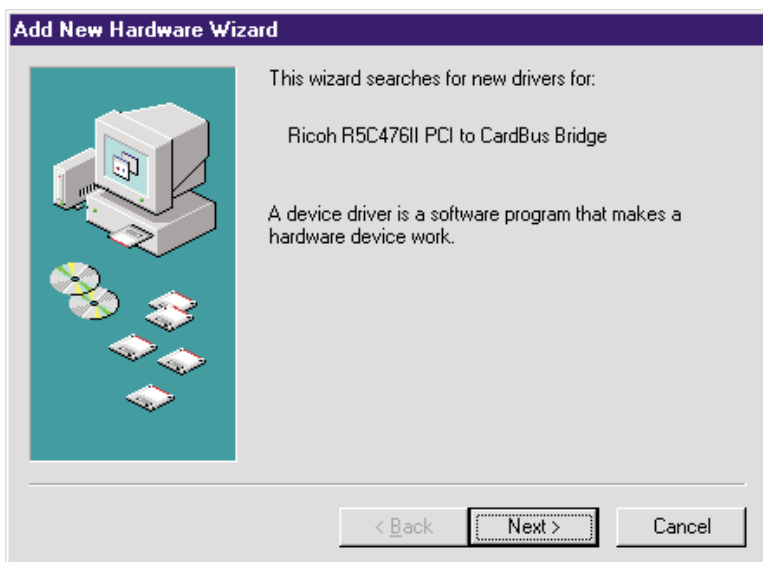
**Figure 13. PC Card Wizard window 3**

15. Click the Finish button. Windows will install a few files from the Windows CD-ROM, and the window of will appear:



**Figure 14. PC Card Wizard window 4**

16. Click the Finish Button again to complete the installation of the first device. Windows will then detect the second part of the adapter:



**Figure 15**

17. Click the Next button. The following window appears:



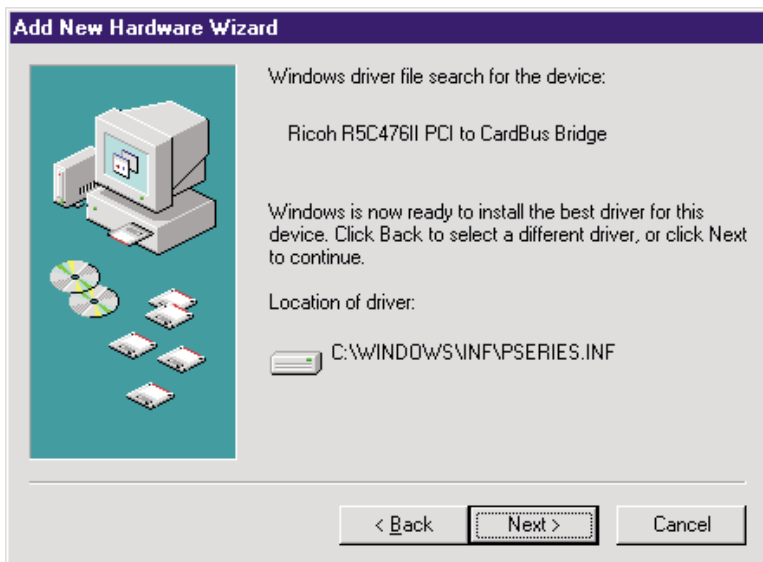
**Figure 16**

18. Leave the Search for the best driver for your device radio button checked and click the Next button. The following window appears:



**Figure 17. Add New Hardware Wizard window 3**

19. Uncheck all of the boxes on the Add New Hardware Wizard Dialog and click the Next button. Windows will search briefly. Then the window of Figure 18 will appear:



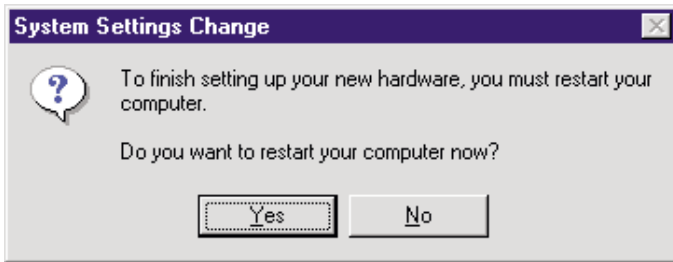
**Figure 18. Add New Hardware Wizard window 4**

20. Click Next. The following window appears:



**Figure 19**

21. Click the Finish button again to complete the installation of the second device. The following window appears:



**Figure 20**

22. Answer Yes and let your computer restart. The PCMCIA adapter is now installed.

23. Install APWIN as described in your Installation and Getting Started manual.

24. Install the PCM-WIN card.

This completes the installation.



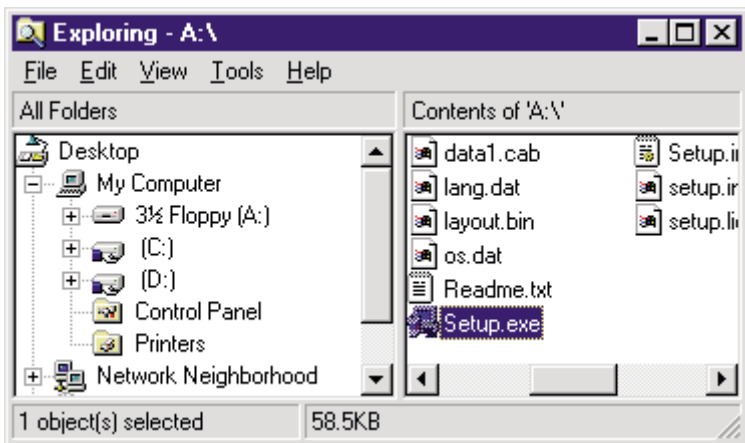
## For Windows NT Systems

**This procedure should be followed before APWIN and PCM-WIN (the Audio Precision PCMCIA card) are installed.**

**This procedure assumes that you have Windows NT 4.0 updated with the most recent service pack from Microsoft. This documentation was written using NT Service Pack 6.0a, available from [www.microsoft.com](http://www.microsoft.com).**

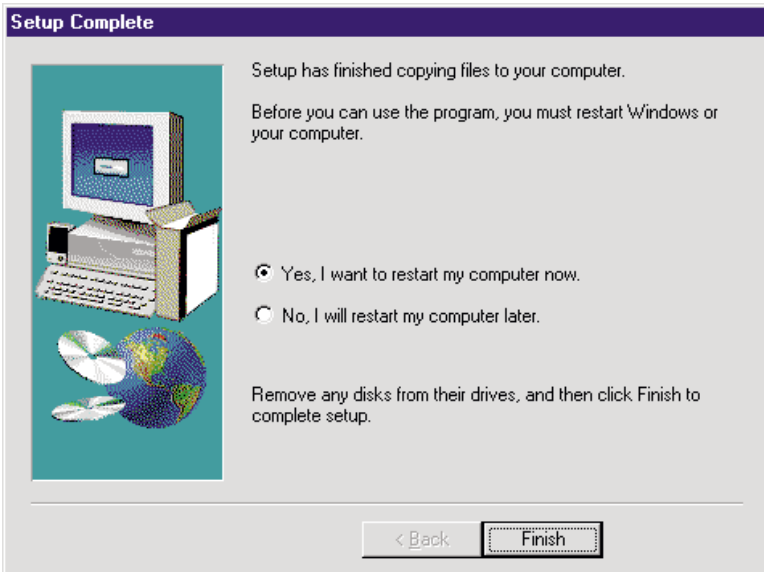
**You will need to have Administrator privileges on the machine to install both the PCMCIA adapter drivers and APWIN.**

1. Install the hardware as instructed in the Manufacturer's manual.
2. Install the drivers for the PCMCIA adapter.
3. Run the setup.exe on the driver disk that comes with the PCMCIA adapter (see Figure 21).



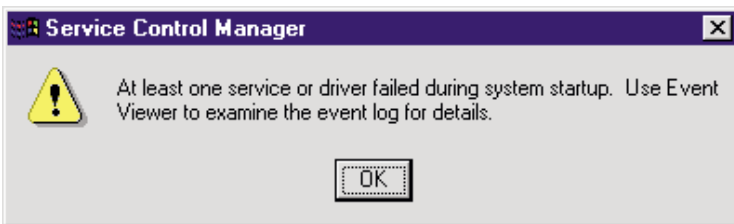
**Figure 21**

4. Click the Next button on the Welcome screen, then click the Yes button on the Software License Agreement window. The setup progresses.
5. On the Setup Complete window (see Figure 22), make sure the "Yes, I want to restart my computer now" button is checked, then click the Finish button.
6. After the computer reboots, install the APWIN software.



**Figure 22**

7. After APWIN is installed and the computer again rebooted, the following error message appears (Figure 23):



**Figure 23**

8. Click the OK button.
9. Reinstall the drivers for the PCMCIA adapter by again running setup.exe on the driver disk that came with the PCMCIA adapter (steps 3 through 5).
10. After the computer completes the reboot, shut it completely down.
11. Insert the PCM-WIN card and connect the interface cable to your Audio Precision instrument.
12. Your computer is now ready to run APWIN with the PCM-WIN card and PCMCIA adapter. **You will need to reinstall the PCMCIA adapter driver if you upgrade or reinstall your APWIN software.**





Audio Precision, Inc.  
PO Box 2209  
Beaverton, Oregon 97075-2209  
U.S. Toll Free: 1-800-231-7350  
Tel: 503-627-0832 Fax: 503-641-8906  
email: [techsupport@audioprecision.com](mailto:techsupport@audioprecision.com)  
Web: [audioprecision.com](http://audioprecision.com)